



FRANCE CRUISES



Wine & Water is a high standing hotel barge that is cruising the waterways of Burgundy, France. Wine & Water offers Private Charter Cruises for 2 to 6 passengers. The luxury barge has 3 bedroom suites. The barge is fully air-conditioned with all the comforts for a unique and personalized cruise vacation on the canals and rivers near Dijon and Beaune in the heart of the French wine country.

Your captain Max Renau has more than 30 years' experience on the French and European waterways. He will share all of his knowledge and skills making your holiday on board Wine & Water a very memorable trip.



Get ready to discover the beauty of the Burgundy landscape, the canal and lock system, the secrets of some of the finest French wines and vineyards. As you find yourself sitting on the sundeck, sipping a fine burgundy, contemplating a lazy stroll or cycle into Chateauneuf, you may wonder if a more relaxing spot exists in France. Down in the open-plan salon, large windows illuminate black leather sofas, colorful cushions and a kitchen bar where pastries and yoghurts are laid out each morning by dynamic Max and Bea. Cozy up in cabins with new beds, good lights, ensuite Italian showers; butterflies flutter over soft grey wallpaper. Find clever use of space, drinks in the fridge, and best quality everything. With a party of six, book a cruise down the canal!

THE BARGE:

- Built in 1951
- Converted into a hotel barge in 2012
- Last remodeled in 2012
- Measures 98 ft. long by 16.5 ft. wide
- Three (03) onboard cabin accommodations
- Six (06) passenger capacity/ 3 crew members
- Air Conditioning and Central Heating



CABINS:

There are three (3) luxurious and spacious air-conditioned guest cabins on board **Wine & Water**, each with private en suite bathroom. Individually controlled room temperature.

CABIN SIZE:

The height of the cabins are 2.2 metres (7.2 feet).
 Wine & Water Suite measures 14.2 ft. x 15.4 ft.
 Cabins 2 & 3 measure 8.2ft. x 12.7 ft.
 Cabin 1 & 2 have two opening windows (50 x 40cm , 1.6 x 1.3ft). The main suite has 4 opening windows and 4 opening windows in the bathroom (50 cm x 40cm , 1.6 x 1.3ft)

BEDDING CONFIGURATION & SIZE:

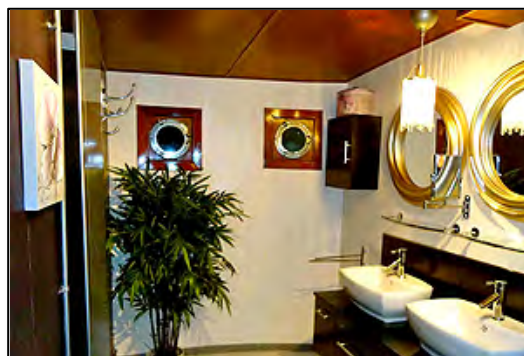
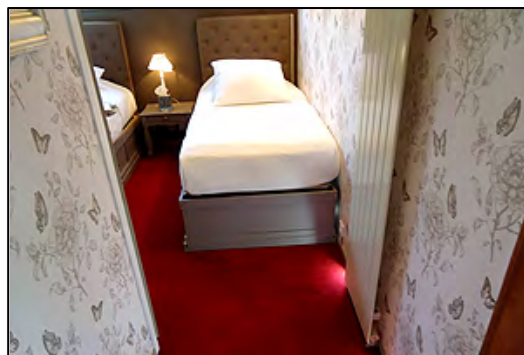
- Double - 6.0 ft. X 6.3 ft.
- Twin - 6.3 ft. X 3 ft.

BATHROOMS:

Each cabin has a private bathroom with large shower, sink and toilet. Each cabin is also provided a hairdryer. Opening window, shaving socket and clean towels every day and also is shampoo, soap, and body cream.

AMENITIES:

- Central Air Conditioning & Heating
- Clean laundry daily
- Drawer Space
- Closet Sapce
- TV, DVD & CD Player
- Alarm Clock
- Electricity (220V)





SALON/DINING ROOM:

The salon and dining area measures 371 square feet and has a carpeted floor, plus 12 opening windows that provide a well lit interior. There is air conditioning and separate heating system. Includes a large sofa and 2 arm chairs and large dining table with plenty of space for 6 persons. Wine & Water offers television with DVD player in lounge, plus a library of music for stereo system. Wifi throughout the vessel. Open bar and bar fridge available for passengers.

The **Salon/Dining Room** features:

- Bar
- Sofas
- Television
- Sound System



ON DECK:

While cruising on Wine & Water enjoy your time lounging on a beautiful spacious sun deck that measures 433 square feet. There is also a large covered area for dining outside with a large table and 6 dining chairs. There are bikes onboard for use by the passengers.





Wine & Water will be cruising through the very scenic waterways of the Burgundy region in France. If you are looking for a taste of French authenticity then this cruise is for you. You will also experience the lock systems that French canals are famous for.

The Burgundy region of France is well renowned for the prestigious wines that they produce. On this cruise you will get the opportunity to visit the Capital of Burgundy wines, Beaune. It is situated in the heart of prestigious vineyards. Beaune is also known for its art with the centerpiece being Hospices de Beaune which has beautiful multi-colored roofs on its buildings.

During this cruise you will also see visit the magnificent Valley of the Ouche. This journey will take you back in time passing through a unique landscape as the canal twists through the narrow valley. As the valley slowly unfolds, the barge passes through the charming villages of Saint Marie sur Ouche and Pont de Pany.

Another highlight of your week will be visiting the city of Dijon where you will be taken to the Dijon market and to visit the historical city center. Dijon is one of the most beautiful cities in France. There is a self-guided walk in the city, called Parcours de la chouette, shown by owl arrows and numbered owl plates in the ground. There are 22 stops showing interesting stuff. Make sure to try the local wines since Burgundy has the highest number of Appellations of any French region. You will find the reds are terrific. Americans unfamiliar with wine history might be surprised to find that white burgundies compare favorably with California chardonnays – they are, after all, from the same grape.

Cruise Highlights:

- Cruise through Burgundy on the **Canal du Bourgogne**
- Visit the wall enclosed vineyards of **Clos de Vougeot**
- Visit **Beaune**, the capital of the wine region of Burgundy
- Take a scenic drive along the famous '**Route du Grand Crus**'
- Dine in style at **local restaurants**

Food & Wine



The chef aboard *Wine & Water* takes pride in the food served on board. We serve a wonderful continental breakfast on board, with croissants and pastries and much more. All fresh from the local bakery, cereals, yogurts and fruit. Buffet lunches with fresh local Burgundian products consists of cold meats, tarts or quiches and various colourful salads, and a cheeses. Evening dinners are onboard and two of them are taken in local restaurants. All meals are served with local wines.

We have a great selection of wines on board – obviously serving a lot of Burgundy wine but also including wines from other regions such as Chateaufeuf du Pape, Sancerre, and Bordeaux.

We will carefully pair fine wines from Burgundy and beyond with all of your meals. Lunch is served as a buffet with lots of colourful salads, cold meats, terrines and of course cheese. Our candle lit dinners are more formal with four plated courses.





MOBILITY RESTRICTIONS: Wine & Water has no wheelchair access. There is a boarding ramp for boarding the barge. From the deck to the salon there are 6 wide steps with hand rail on either side. From the salon to the cabins there are 3 steps. Those with extremely limited mobility may have a difficult time navigating this vessel.

PUBLIC ROOMS: The Salon has a dining area, sofa and arm chairs; A large bar with bar stools and an open planned kitchen; Outside table on sundeck can be used for meal times; The height of the ceiling is 7.6 ft.

ONBOARD LEISURE AND ENTERTAINMENT: 12 opening windows provide lots of light; Open Bar and Bar Refrigerator; WiFi throughout entire barge; Television with DVD player; Bicycles available for shore excursions.

